



Reliable Steel Distributors

AN ISO 9001:2008 CERTIFIED COMPANY
GOVT. RECOGNIZED EXPORT HOUSE



Manufacturers, Stockists & Exporters of

Carbon Steel | Stainless Steel | Alloy Steel | High Nickel Alloy | Copper Nickel | Titanium

Pipe | Fittings | Flanges | Plates | Fabrication Products | Pipe Sleeve

www.reliablesteel.in

Profile

Reliable Steel Distributors, is established with a view to cater to the needs of both domestic and international market. Reliable is one of the leading manufacturers for Pipes, Pipe Fittings, Flanges, Reli Sleeve based in Mumbai with a distance of 20 km from both sea port and airport. Reliable is into stock business supplying to the domestic as well as the international market in Stainless Steel, Carbon Steel, Alloy Steel, High Nickel Alloy, Aluminium Brass, Copper and Titanium materials.

Reliable has been exporting to USA, UAE, Kuwait, Iran, Iraq, Oman, Saudi Arabia, Qatar, Bahrain, Germany, UK, France, Netherlands, Brazil, Columbia, Mexico, Ecuador, Singapore, Malaysia, Indonesia, Vietnam, Korea, Australia, Etc.

Reliable has a wide stock range of material right from API 5L Seamless and Welded Pipes to Monel, Inconel, Duplex, Super Duplex, Hastelloy Pipes and Tubes in both seamless and welded. It specializes in API pipes and tubes from Grade B to X80 in PSL1/2 and High Nickel Alloy Pipes and Tubes.

Mission

Our mission is to provide prompt delivery and quality products at competitive price. Reliable has been surviving the industry smoothly due to its sales network, certified quality, innovation, value for human resources and focus on clients.

Third Party Inspection (TPI)

We can do TPI for following :
LRIS, ABS, DNV, TUV, VELOSI, SGS, BV, GL etc.

Carbon Steel Pipes & Tubes (Seamless and Welded)

ASTM Standard

ASTM A53	ASTM A178	ASTM A192	ASTM A334	ASTM A512	ASTM A672	ASTM A1005
ASTM A106	ASTM A179	ASTM A333	ASTM A501	ASTM A556	ASTM A984	ASTM A1037
ASTM A134	ASTM A252	ASTM A500	ASTM A524	ASTM A671	ASTM A822	ASTM A1024
ASTM A135	ASTM A214	ASTM A381	ASTM A523	ASTM A595	ASTM A795	API 5L Seamless Line Pipe
ASTM A139	ASTM A210	ASTM A369	ASTM A513	ASTM A589	ASTM A787	API 5L DSAW/LSAW/SAW/ERW/HFW
				ASTM A587	ASTM A691	API 5L

Origin

Reliable imports & stocks material from :
Europe, Japan, USA, South Africa, Korea, India, Germany, China, Taiwan, Turkey, Ukraine.

Supplementary Requirements

NACE MR0175, NACE MR0103, ISO 15156, HIC- NACE TM0284, SSC - NACE TM0177, SOUR SERVICES, OFF SHORE SERVICES, WITH LOW SULPHUR <0.002%, IMPACT TEST AT -50°C, BEAD CRUSH, RADIOGRAPHY (X RAY).

Coating

Special Coating i.e Cement Mortar Lining, FBE Coating, Galvanized (Hot Dipped), 3 LPP, 3 LPE, PTFE Coating, Epoxy Coating can be provided.

Delivery Condition

As Rolled, Normalized, Thermomechanical Rolled / Formed, Normalized & Tempered, Quenched & Tempered, Stress Relieved.

Services

Cut Length, Beveling, Grinding, Machining, Taper Boring, Low Stress Stamping, Non Destructive Testing, Destructive Testing, Colour Coding, Laser Marking, Export Packing, Hydro testing, Hardness Test, PMI Test, Hot Tensile & Other testing Services available on request.

Email : navas@reliablesteel.in

www.reliablesteel.in

Phone : +91 22 42132924

Fax : +91 22 23859458

API 5L Pipes

Types

Seamless | LSAW | DSAW | HSAW | ERW | HFW

Grades

PSL 1 - API 5L Gr B, X42, X46, X52, X56, X60, X65, X70

PSL 2 - API 5L Gr B, X42, X46, X52, X56, X60, X65, X70, X80, X100, X120

PSL 1 / PSL 2 - L245, L290, L320, L360, L390, L415, L450, L485, L555

Sizes

LSAW / DSAW - 16" OD to 120" OD (6.35MM to 100MM THK)

HSAW - 8" NB to 120" NB (5MM to 25MM THK)

Seamless - 1/2" NB to 48" NB (SCH 10 to SCH XXS & Heavier)

ERW / HFW - 1/2" NB to 24" NB (2 MM to 24MM THK)

Origin

Reliable imports & stocks material from :

Europe, Japan, USA, South Africa, Korea, India, Germany, China, Taiwan, Turkey, Ukraine.

Supplementary Requirements

NACE MR0175, NACE MR0103, ISO 15156, HIC- NACE TM0284, SSC - NACE TM0177, SOUR SERVICES, OFF SHORE SERVICES, WITH LOW SULPHUR <0.002%, IMPACT TEST AT -50°C, BEAD CRUSH, RADIOGRAPHY (X RAY).

Coating

Special Coating i.e Cement Mortar Lining, FBE Coating, Galvanized (Hot Dipped), 3 LPP, 3 LPE, PTFE Coating, Epoxy Coating can be provided.

Delivery Condition

As Rolled, Normalized, Thermomechanical Rolled / Formed, Normalized & Tempered, Quenched & Tempered, Stress Relieved.

Stainless Steel Pipes & Tubes (Seamless and Welded)

ASTM Standard

ASTM A213	ASTM A312	ASTM A450	ASTM A688	ASTM A791	ASTM A928	AS1163 201	MIL-P-1144
ASTM A249	ASTM A358	ASTM A511	ASTM A731	ASTM A803	ASTM A943	AS1528 201	
ASTM A268	ASTM A372	ASTM A530	ASTM A778	ASTM A813	ASTM A949	G3459 201	
ASTM A269	ASTM A376	ASTM A554	ASTM A789	ASTM A814	ASTM A1012	ANSI/ASME B36.10M	
ASTM A270	ASTM A409	ASTM A632	ASTM A790	ASTM A903	ASTM A1053	ANSI/ASME B36.19M	

Origin

Reliable imports & stocks material from :

Europe, Japan, USA, South Africa, Korea, India, Germany, China, Taiwan, Turkey, Ukraine.

Type

Seamless, Welded, ERW & EFW, Straight-Seam Welded, Heavily Cold Worked

Supplementary Requirements

Transverse Tension Test, Flattening Test, Flaring Test, Etching Test, Stabilizing Heat Treatment, NDE, Eddy Current, Hydro Test.

Delivery Condition

Solution Annealed, Polished, Mill Finish, Electropolished, Solution treatment, Normalize and Tempered, Full or Isothermal Anneal

Speciality

Nace MR0175 / ISO15156, Impact Test at -100°C, Radiography (X-Ray), Grain Size 7 or Coarser (For High Carbon), IGC Test with Practice A, B, C, D & E.

Nickel Alloy Pipes & Tubes

ASTM Standard

ASTM B163 (Nickel 200 / Nickel 201 / UNS N02200 / UNS N02201)

ASTM A209, ASTM A213, ASTM A250, ASTM A335, ASTM A369, ASTM A691

ASTM B161	ASTM B517	ASTM B407	ASTM B690
ASTM B165	ASTM B444	ASTM B514	ASTM B423
ASTM B622	ASTM B704	ASTM B515	ASTM B673
ASTM B626	ASTM B705	ASTM B535	ASTM B674
ASTM B163	ASTM B464	ASTM B710	ASTM B677
ASTM B167	ASTM B468	ASTM B675	
ASTM B516	ASTM B729	ASTM B676	

Ni-Mo alloys

N10001	Ni-cr-fe-mo-cu alloys n06007	N06059
N10665	N06030	Low c-ni-cr-mo-cu alloy n06200
N10675	Ni-Mo-Cr-Fe Alloy N10242	Low c-ni-fe-cr-mo-cu alloy n08031
N10629	Low C Ni Cr-Mo Alloys N10276	Low c-ni-cr-mo-w alloy n06686
N06022	Ni-fe-cr-mo alloys n08320	Ni-co-cr-si alloy n12160
N06035	Ni-cr-mo-fe alloy n06002	Cr-ni-fe-n alloy r20033
N06455	Ni-fe-cr-co alloy r30556	Low c-ni-mo-cr-ta alloy n06210
N06975	Ni-cr-w-mo alloy n06230	
N06985	Low c-ni-cr-mo alloy n06058	

Origin

Reliable imports & stocks material from :

Europe, Japan, USA, South Africa, Korea, India, Germany, China, Taiwan, Turkey, Ukraine.

Supplementary Requirements

NACE MR0175, MR0103 / ISO 3183 / NACE TM0284, HIC & SSC TESTED PIPES.

Condition

Hot Finish, Cold Drawn

Alloy Steel Pipes & Tubes (Seamless and Welded)

ASTM Standard

ASTM A209	ASTM A369	ASTM A530	ASTM A714
ASTM A213	ASTM A426	ASTM A595	ASTM A847
ASTM A250	ASTM A450	ASTM A618	ASTM A1016
ASTM A334	ASTM A513	ASTM A691	
ASTM A335	ASTM A519	ASTM A697	

Grade

ASTM A209 T1, T1a, T1b

ASTM A213 T2, T5, T5b, T5c, T9, T11, T12, T17, T21, T22, T23, T24, T36, T91, T92, T122, T911

ASTM A250 T1, T1a, T1b, T2, T11, T12, T22

ASTM A335 P1, P2, P5, P5b, P5c, P9, P11, P12, P15, P21, P22, P23, P24, P36, P91, P92, P122, P911

ASTM A369 FPA, FPB, FP1, FP2, FP5, FP9, FP11, FP12, FP21, FP22, FP91, FP92

ASTM A691 CM65, CM70, CM75, CMSH70, CMS75, CMSH80, ½ Cr, 1Cr, 1¼ Cr, 2 ¼ Cr, 3Cr, 5Cr, 9Cr, 91

Type

Seamless, Welded, ERW, EFW, HFW, LSAW, HSAW, Forged.

Supplementary Requirements

NACE MR0175, NACE MR0103, ISO 15156, HIC- NACE TM0284, SSC - NACE TM0177, SOUR SERVICES, OFF SHORE SERVICES, WITH LOW SULPHUR <0.002%, IMPACT TEST AT -50°C, BEAD CRUSH, RADIOGRAPHY (X RAY).

Services

Sour Service, Cut Length, Bevelling, Grinding, Machining, Taper Boring, Low Stress Stamping, Non Destructive Testing, Destructive Testing, Colour Coding, Marking, Export Packing, Heavy Wall Thickness, Odd Sizes, Fast Delivery, Hydro testing, Hardness Test, PMI Test, Hot Tensile & Other testing Services available on request

Fittings

ASTM Standard

ASTM A105	ASTM A234	ASTM A437	ASTM A727	ASTM A836	ASTM B366
ASTM A181	ASTM A320	ASTM A453	ASTM A733	ASTM A854	ASTM B381
ASTM A182	ASTM A350	ASTM A522	ASTM A758	ASTM A860	ASTM B462
ASTM A193	ASTM A403	ASTM A540	ASTM A774	ASTM A988	ASTM B564
ASTM A194	ASTM A420	ASTM A694	ASTM A815	ASTM B363	ASTM B637

Origin

Reliable imports & stocks material from :
Europe, Japan, USA, South Africa, Korea, India, Germany, China, Taiwan, Turkey, Ukraine.

Supplementary Requirements

Macrotech Test, Heat Treatment, Corrosion Test, Hardness Test, Grain Size, Stabilization Treatment,

Speciality

NACE MR0175, NACE MR0103, ISO 15156, HIC- NACE TM0284, SSC - NACE TM0177, SOUR SERVICES, OFF SHORE SERVICES, WITH LOW SULPHUR <0.002%, IMPACT TEST AT -50°C, BEAD CRUSH, RADIOGRAPHY (X RAY). Heavy Wall Thickness, Odd Sizes.

Coating

Special Coating i.e Cement Mortar Lining, FBE Coating, Black / Galvanized (Electro / Hot Dip), 3 LPP, 3 LPE, PTFE Coating, Epoxy Coating can be provided.

Delivery Condition

Normalized, Annealed, Normalized and Tempered, Quenched & Tempered, Stress Relieved, Solution Annealed

Services

Bevelling, Grinding, Machining, Taper Boring, Low Stress Stamping, Non Destructive Testing, Destructive Testing, Colour Coding, Marking, Export Packing, Hydro testing, Hardness Test, PMI Test & Other testing Services available on request

Email : navas@reliablesteel.in

www.reliablesteel.in

Phone : +91 22 42132924

Fax : +91 22 23859458

Flanges

ASTM Standard

ASTM A105	ASTM A420	ASTM B381
ASTM A182	ASTM A522	ASTM B462
ASTM A234	ASTM A694	ASTM B564
ASTM A350	ASTM A707	
ASTM A403	ASTM A988	

Origin

Reliable imports & stocks material from : Europe, Japan, USA, South Africa, Korea, India, Germany, China, Taiwan, Turkey, Ukraine.

Type

AWWA Hub Flange, Paddle-Blank FLANGE, AWWA Ring Flange, Paddle-Spacer Flange, Blind Flange, Slip-on Flange, Socket Weld Flange, Spectacle Blind Flange, Equal Barrel Flange Stud Out FLange, Heavy Barrel Flange, Threaded Flange, Lap-Joint Flange, Weld Neck Flange, Long Weld Neck Flange, Connection Flanges, Orifice Flange, Spades and Spacers, Anchor Flange, Swivel Ring Flange, Nipo Flange

Supplementary Requirements

Macro Test, Heat Treatment, Corrosion Test, Hardness Test, Grain Size, Stabilization Treatment, Impact Test

Speciality

NACE MR0175, NACE MR0103, ISO 15156, HIC- NACE TM0284, SSC - NACE TM0177, SOUR SERVICES, OFF SHORE SERVICES, WITH LOW SULPHUR <0.002%, Heavy Wall Thickness, Odd Sizes.

Coating

Special Coating i.e Cement Mortar Lining, FBE Coating, Black / Galvanized (Electro / Hot Dip), 3 LPP, 3 LPE, PTFE Coating, Epoxy Coating can be provided.

Delivery Condition

Normalized, Annealed, Normalized and Tempered, Quenched & Tempered, Stress Relieved, Solution Annealed

Round Bars

ASTM Standard & Grade

Round Bars are available in various materials : Stainless Steel | Nickel Alloy | Non Ferrous Metal | Alloy Steel | Carbon Steel

Stainless Steel Grades : 202, 304, 304L, 304H, 316, 316L, 316LN, 316Ti, 309, 310S, 317L, 321, 347, 409, 410, 420,430, 440A, 440B, 440C, 446.

Carbon Steel Grades : 202, 304, 304L, 304H, 316, 316L, 316LN, 316Ti, 309, 310S, 317L, 321, 347, 409, 410, 420,430, 440A, 440B, 440C, 446.

Nickel Alloy Grades : Cupro Nickel (90/10, 70/30), Hastelloy (C-4, C-22, C276, B-2), Nickel (200 / 201 / 205), Monel (K400 & K500), Inconel (600, 601, 625 & 825), Incolloy (800, 800H), Alloy 20, Titanium, Tungston, Moly, Kanthal, Nimonic Nichrome (80:20), Ferro Nickel Alloy (55/45, 60/40, 70/30), Cobalt, Sanicro (28, SS 904L).

Non Ferrous Metals :

Copper : 99.99% (Rolled – Hot & Cold, Electrolytic & Commercial)

Brass : Extruded & Drawn Free Cutting, Naval Brass, 60/40 Brass, Forging Brass

Phosphorus Bronze : PB2, 90/10

Gun Metal : 90/10, 70/30

Lead : 99.95 to 99.99%

Alloy Steel Grades : A-182 - F5, F9, F11, F12, F21, F22 & F91

Finish

Bright, Polish & Black

Supply Condition

Machining (CNC), Centreless Grinding (CG), Heat Treatment, Annealing, Pickling, Polish, Rolling, Forging, Cutting, Bending, Rolling, Machining (CNC),

Stainless Steel Plates

ASTM Standard

ASTM A240, EN 10028

Stainless Steel

Austenitic Grades

ASTM A240 304 / 304L - BS EN 10028-7 - 1.4301/1.4307

P275NH - 1.0487

P355N - 1.0562

P460NH - 1.8935

ASTM A240 316 / 316L - BS EN 10028-7 - 1.4301/1.4304

P275NL1 - 1.0488

P355NH - 1.0565

P460NL1 - 1.8915

ASTM A240 321 / 321H - BS EN 10028-7 - 1.4541

P275NL2 - 1.1104

P355NL1 - 1.0566

P460NL2 - 1.8918

ASTM A240 304H - BS EN 10028-7 - 1.4948

P355NL2 - 1.1106

Duplex

ASTM A240 UNS S31803 - BS EN 10028-7 - 1.4462

Super Duplex

ASTM A240 UNS S32750

Nickel Alloy

Inconel® 600, 601, 617, 625, 718, X-750 Inco Alloy HX:

Incoloy® 800/800H, Alloy 330, Alloy 188, L-605

Supply Condition

In standard & non standard sizes | Available in other thicknesses, widths and lengths | Thickness tolerance to BS EN 10029 Class B

NACE Hardness to MR 0175 | Annealed and pickled | Inter Granular Corrosion test (IGC) to ASTM A 262 Practice E | Hot rolled Mill Finish No. 1

Polished to meet your requirements - dull or bright polishing

Email : navas@reliablesteel.in

www.reliablesteel.in

Phone : +91 22 42132924

Fax : +91 22 23859458

Nickel Alloy Plates

ASTM Standard

Nickel Alloy

ASTM B162 (UNS N02200, UNS N02201)

ASTM B127 (UNS N04400)

ASTM B435 (UNS N06002, UNS N06230, UNS N12160, AND UNS R30556)

ASTM B582 (ALLOY N06007, ALLOY N06975, ALLOY N06985, ALLOY N06030)

ASTM B575 (ALLOY N06035, ALLOY N10276, ALLOY N06022, ALLOY N06455,
ALLOY N06059, ALLOY N06058, ALLOY N06200, ALLOY N06210, ALLOY N06686)

ASTM B168 (UNS N06600, UNS N06601, UNS N06617, UNS N06690,
UNS N06693, UNS N06025, UNS N06045, UNS N06603, UNS N06696,
UNS N06617)

ASTM B443 (UNS N06625, UNS N06219)

ASTM B463 (UNS N08026, UNS N08020, UNS N08024)

ASTM B625 (UNS N08925, UNS N08031, UNS N08932, UNS N08926,
UNS N08354, UNS R20033)

ASTM B409 (ALLOY N08120, ALLOY N08890, ALLOY N08800,
ALLOY N08810, ALLOY N08811)

ASTM B536 (UNS N08330, UNS N08332)

ASTM B688 (N08366, N08367)

ASTM B424 (UNS N08825, UNS N08821)

ASTM B333 (ALLOY N10001, ALLOY N10665, ALLOY N10675, ALLOY N10629, ALLOY N10624)

ASTM B434 (UNS N10242, UNS N10003)

Supply Condition

In standard & non standard sizes | Available in other thicknesses, widths and lengths | Thickness tolerance to BS EN 10029 Class B
NACE Hardness to MR 0175 | Annealed and pickled | Inter Granular Corrosion test (IGC) to ASTM A 262 Practice E | Hot rolled Mill Finish No. 1
Polished to meet your requirements - dull or bright polishing

Email : navas@reliablesteel.in

www.reliablesteel.in

Phone : +91 22 42132924

Fax : +91 22 23859458

Carbon & Alloy Steel Plates

We carry the widest range of Sizes and Specifications in Steel Plate available within India.

EN10025	Pressure Vessel Steel Plate	Offshore & Structural Plate	API 2W Plate
High Strength Low Alloy Steel Plates	A516 Grade 55, 60, 65, 70	Boiler, Pressure Vessel & Chrome Moly Steel	API 2Y Plate
A36	TC 128	Pressure Vessel Steel	Quenched & Tempered
A572 Grade 42, 50, 60, 65	A 612	ASME SA516/ASTM 516-Gr70	EN 10025 S690QC
CSA G40.21 Grade 44W, 50W, 50A	A 537	EN 10028:3 P355 NL1 & P355 NL2	RQT 701
A709 Grade 36, 50, 50W	A 285	BS 1501 224 490B LT50	EN 10025 S 890QC
A709 Grade HPS 50W, 70W	Offshore & Marine Steel Plate	BS 1501 223 490B LT30	Abrasion Resistant Steel
A ASHTO M270 Grade 50, 50W	ABS Grade A, B, AH36, DH36, EH36	BS 1501 225 490B LT50	Abrazo 400
A588 & A606	API 2H Grade 50	EN 10028:3 P355NH	High Yield Steel Plate
A 871 - 65	A633	ASME SA537/ASTM A537-Class 1	460 Yield Steel Plate
A656 Grade 50, 60, 70, 80	Armor & Ballistic Steel Plate	ASME SA516/ASTM A516-Gr-65	EN 10028:3 P460NL1
A 573 Grade 58, 65, 70	MIL A 46100	ASME SA516/ASTM A516-Gr-60	EN 10028:3 P460NL2
A283	MIL A 12560	EN 10028:3 P460NL1	EN 10028:3 P460NH
Alloy Quenched & Tempered Steel Plate	MIL A 46177	EN 10028:3 P460NL2	EN 10025:3 S460N
A514 Grade B, E, F, H, Q, S	Low/High Carbon Non-Structural Steel Plate	EN 10028:3 P460NH	EN 10025:3 S460NL
130 ksi/890 MPa Yield Strength	A 830-1045	Boiler Plate Steel	Armour Plate
140 ksi/960 MPa Yield Strength	C1020	ASME SA516/ASTM A516 Gr 60	Chrome Moly Plate
TMCP 100 ksi/690 MPa	Caterpillar Spec Steel	EN 10028:3 P275NH	ASME SA 387 & ASTM A387
A710	EN Standard Steel Plate	BS 1501 161 430 A/B	SA 387 / A387 Gr 11
ASTM A829-4140	S235	EN 10028:2 P265 GH	SA 387 / A387 Gr 12
Abrasion Resistant Steel Plate	S275	EN 10207 P2655	SA 387 / A387 Gr 22
A R Medium : AR200/AR235	S355	HIC Steel Plate	Offshore & Structural Steel Plate
A R 400/400F	S420	ASME SA516 HIC & ASTM A516HIC	Services
A R 450/450F	S690	CarElso HIC Premium+	Stockholding, Mill Supplies, Finishing,
A R 500/500F	S890	API Plate	Profiling, Cut pieces (Water Jet, Plasma,
A R 600		API 2H Plate	Sawing, Laser), Testing etc.

Copper Nickel Pipes & Tubes

ASTM Standard

Alloy UNS	Common Name	European
C70600	90-10	CuNi10Fe
C71500	70-30	CuNi30Fe
C71640	66-30-2-2	

Applications

Sea water pipework, Offshore fire water systems, Heat exchangers and condensers, Sheathing of legs and risers on offshore platforms and boat hulls, Hydraulic lines, Fish cages for aquaculture, Desalination units.

Origin

Reliable imports & stocks material from :

Europe, Japan, USA, South Africa, Korea, India, Germany, China, Taiwan, Turkey, Ukraine.

Copper & Copper Alloy - Tubes

ASTM Standard

ASTM B111

Grade

C10100	C12200	C44300	C61400	C71640
C10200D	C14200	C44400	C68700	C72200
C10300	C19200	C44500	C70400	
C10800	C23000	C60800	C70600	
C12000	C28000	C61300	C71000	

Services

Cut to Length, Multiple Length, Laser Cutting, Polishing, Special Materials.

Delivery Condition

The Tubes shall be Furnished in any of the following conditions as specified :

H55 light-drawn, H80 hard-drawn, O61 annealed, HR50 drawn, stress-relieved

Supplementary Requirements

Flattening Test, Expansion Test, Mercurous Nitrate Test, Hydrostatic Test, Eddy Current Test.

Titanium Pipes & Tubes (Seamless & Welded)

ASTM Standard

- ASTM B265 - Titanium and Titanium Alloy Strips, Sheets and Plates
- ASTM B299 - Titanium Sponge
- ASTM B338 - Seamless and Welded Titanium and Titanium Alloy Condenser and Heat Exchanger Tubes
- ASTM B348 - Titanium and Titanium Bars and Billets
- ASTM B363 - Seamless and Welded Unalloyed Titanium and Titanium Alloy Welded Fittings
- ASTM B367 - Titanium and Titanium Alloy Castings
- ASTM B381 - Titanium and Titanium Alloy Forgings
- ASTM B861 - Titanium and Titanium Alloy Seamless Pipe
- ASTM B862 - Titanium and Titanium Alloy Welded Pipe
- ASTM B863 - Titanium and Titanium Alloy Wire

Titanium & their Alloys (Grade)

Grade 1, Grade 2, Grade 2H, Grade 3, Grade 4, Grade 5, Grade 6, Grade 7, Grade 7H, Grade 9, Grade 11, Grade 12, Grades 13, Grade 14, Grade 15, Grade 16, Grade 16H, Grade 17, Grade 18, Grade 19, Grade 20, Grade 21, Grade 23, Grade 24, Grade 25, Grades 26, Grade 26H, Grade 27, Grade 28, Grade 29, Grades 30, Grade 31, Grade 32, Grades 33, Grade 34, Grade 35, Grade 36, Grade 37, Grade 38.

Origin

Reliable imports & stocks material from :

Europe, Japan, USA, South Africa, Korea, India, Germany, China, Taiwan, Turkey, Ukraine.

Type

Seamless, Welded, ERW, Fabricated

Condition

Hot Finished, Cold Drawn

4130 Pipes & Pipe Fittings

This low alloy steel containing nominally 0.3% carbon, 1% chromium and 0.2% molybdenum is used widely in oil patch applications. It is similar to 4140 which has a higher carbon level giving 4130 improved weldability in comparison to 4140, though this is achieved at the expense of through thickness strength. The hardenability limitations of this grade (depth to which it will harden / obtain the specified mechanical properties after heat treatment) must always be taken into account when designing and selecting equipment.

ASTM Standard

ASTM A519

AISI 4130 L80

API 5CT L80

Products

Elbows, Tees, Reducers, Flanges, API Connections, Hammer Lug Unions, Manifold Fittings, High Pressure Couplings & Hoses
API 6A Valves, High Pressure Seamless Pipe, Turnkey Manifold, Solid Round Bars

Speciality

NACE MR0175, NACE MR0103, ISO 15156, HIC- NACE TM0284, SSC - NACE TM0177, SOUR SERVICES, OFF SHORE SERVICES, WITH LOW SULPHUR <0.002%, IMPACT TEST AT -50°C, BEAD CRUSH, RADIOGRAPHY (X RAY). Heavy Wall Thickness, Odd Sizes, High Pressure upto 10000 & 15000 PSI.

Delivery Condition

Annealed, Normalized, Stress Relieved, Quenched & Tempered

Services

Cut to Length, Painting, Additional Testing, Sand Blasted, Colour Coding.

Hollow Section

ASTM Standard

ASTM A554, EN 10219

Grade

Stainless Steel - 301, 302, 304, 304L, 305, 309S, 309S-Cb, 310S, 316, 316L, 317, 321, 330, 347, 429, 430, 430-Ti.

Carbon Steel - S235JRH, S275JOH, S275J2H, S355JOH, S355J2H, S355K2H

Size

Square Hollow Section - 20 x 20 - 300 x 300

Rectangular Hollow Section - 30 x 20 - 400 x 200

Services

Cut to Length, Multiple Length, Laser Cutting, Polishing, Special Materials.

Delivery Condition

The Tubes shall be Furnished in any of the following conditions as specified :

As welded, Welded and Annealed, Cold Reduced, Cold Reduced and Annealed, Seamless

The inside diameter bead shall be furnished in any of the following conditions as specified :

Bead not removed

Bead controlled to 0.005 in (0.13 mm) or 15% of the specified wall thickness, whichever is greater,

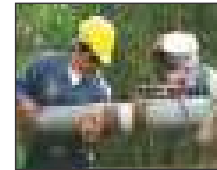
Bead Removed

INSERT SLEEVE

SIZE : 2" TO 72" OD (LIQUID EPOXY & FBE COATING)

INSERT / PIPE SLEEVE – FEATURES

- 100% Holiday free area internally and externally coated.
- A two layer heat shield.
- Sealing Rings acts as a physical barrier to seal the clearance between the pipe and the sleeve.
- Tabs / Pins set a uniform weld gap and anchor.
- Refractory clamp to prevent heat transfer during welding and to protect the refractory tape and the external coated area of the sleeve.



FBE & LIQUID EPOXY COATING FOR PIPE SLEEVE

Corvel – 10-8158 - Oil & gas industry

FBE 3M XC 6171 - Seawater and sour gas service requirements.

Hempel-Hempadur 85671 - Water and chemical resistance.

Interline 984 - Corrosion protection to the internals of steel storage

Interzone 954 - Cathodic disbondment resistance.

Scotchkote 134 - Is resistant to wastewater, corrosive soils, hydrocarbons, harsh chemicals, and sea water

Sigma EPH 7497 – Suitable for bell holing jobs.

Sigma Phenguard 930 – Resistance to a wide range of organic acids, alcohol, edible oils, fats & solvents

Sigma Phenguard 935 - Good resistance to hot water

Sigma Phenguard 940 - Tank coating system for Chemical tankers

Sigma Line 2000 – To metal for pipe externals.

Sigma Shield 1200 – Water hull of ice going & ice breaking vessels.

Plasite 7159 - High abrasion resistant .

Enviroline 405 HT - Two Component polyclamine cured lining system process vessels and tanks operating at high temperature.

Application For Pipe Sleeve

- Water Pipe Line
- Internal Coated Pipeline
- Water Injection Lines
- Fire Water Line
- Onshore Pipelines
- Offshore Pipelines
- Injection and Re-injection
- Crude Oil Gathering
- Highly Corrosive Gas Piping
- Portable & Waste Water
- Jet Fuel Transfer

Fabrication

Products

DEAERATOR	DRIERS
HEAT EXCHANGERS	REACTOR VESSELS
PRESSURE VESSELS	INDUSTRIAL FANS & BLOWERS
STORAGE TANKS & BULLETS	POLLUTION CONTROL EQUIPMENT
STEEL CHIMNEY	CONE STRAINERS
SILENCERS	FUEL FIRING EQUIPMENT & FLARE STACK
DAMPERS	DISH ENDS
DUCT & METALLIC EXPANSION BELLOWS	DISHED ENDS
SCREW CONVEYOR	TUBE SHEET
GLASS HANDLING TOOL	BAFFLE PLATE

Manufacturing Facilities

Profile Cutting	Pug Cutting
Welding Machines ARC, TIG, MIG.	Monorail
Grinding M/C.,	Bending
Sanding M/C.	Welding
Plate Bending / Rolling M/C.	Fitment

Bend Pipes

We are supplier of mandrel bends to the stainless steel fabrication industry. Our products are used in a wide range of markets in India and overseas, also bending to customers specifications we stock a wide range of stainless steel, mild steel and aluminium butt weld bends, safety grab rails and swimming pool ladder rails. With many years of experience and expertise in forming tube & pipe, Rolf is committed to providing top quality, bent tube and box section in Stainless Steel, Mild Steel, CDS, T45, Aluminum and on time service to our clients .

Mandrel Bending | Rolling | Swaging & Flaring | CNC Capability | One-off Bends to Multiples | Fast & Accurate | Quick turn-around | Stainless, Aluminium, Copper, Brass & Pipe

Tube size from 6mm to 114.3 mm OD can be manipulated on a variety of different centre line radii to accommodate differing wall thicknesses required by fabricators. Various areas of product design and fabrication have recognised the potential in utilising this specialist capability, including architectural designers, where the use of high-performance stainless tube matches many contemporary design visions.

A variety of methods can be used for bending stainless steel tubing. If the bend has a large radius, the tubing can be curved with three-roll benders (also called section benders, profile benders, or angle rolls.) If the bend has a tight radius, the tubing can be bent on a rotary-draw bender through a process called mandrel tube bending.

Both welded and seamless tubing can be curved. When the desired radius is very tight, seamless usually bends better.

Since the application of bent stainless tube often involves products for the pharmaceutical and food industries, care must be taken to avoid carbon contamination of the steel. The machinery and tooling should be cleaned and prepared to avoid such contamination. Furthermore, care should be taken to avoid having metal strapping in contact with the stainless parts. Cardboard, wood or plastic can be used to protect the tubing during transit.

After bending stainless steel tubing, a nut and sleeve can be slid over the ends which then can be flared. Process piping is often supplied this way.

Tubing is also becoming increasingly popular in construction in roof trusses, canopies, balconies, and many other applications. Accuracy of 0.1 of a degree is achieved for a variety of applications, automotive, architectural and marine.

Nickel Alloy Forging

ASTM Standard

ASTM B160	ASTM B574	ASTM B649	ASTM B691
ASTM B564	ASTM B462	ASTM B335	ASTM B425
ASTM B164	ASTM B472	ASTM B473	ASTM B573
ASTM B572	ASTM B166	ASTM B408	
ASTM B581	ASTM B446	ASTM B512	

Origin

Reliable imports & stocks material from :

Europe, Japan, USA, South Africa, Korea, India, Germany, China, Taiwan, Turkey, Ukraine.

Delivery Condition

Annealed, Stress Relieved.

Fasteners

Grades

Stainless Steel
Carbon Steel
Nickel Alloy Steel
Duplex & Super Duplex Bolts
Copper & Copper Alloy
Titanium
Heat Resistance

Products

Anchor Washers
Screws Nuts
Bolts Studs
Sockets Pins

Specification (Standards)

Bolt Specifications

ASTM A193 ASTM A449
ASTM A307 ASTM A490
ASTM A320 ASTM F593
ASTM A325 ASTM F1554
ASTM A354 ASTM F3125

Casting / Forging Specifications

ASTM A47
ASTM A48
ASTM A536
ASTM A668

Nut Specifications

ASTM A194
ASTM A563
ASTM F594

Plating Specifications

ASTM A153
ASTM B695
ASTM F1941
ASTM F2329

Rebar Specifications

ASTM A615
ASTM A706

Washer Specifications

ASTM F844
ASTM F436
ASTM F959
ASTM F2437

Coatings

Our range of industrial coating and finishes includes:

Zinc	Zinga	PTFE (Xylan*)	Magnigard	Silver
Phosphate	Zinc Nickel	Chromium	Sermaguard	Epoxy Coatings
Zinc Clear	Chemical Galvanising	Nickel	Manganese Phosphating	Molykote
Sheradized	Zinc Electroplating	Electroless Nickel Plating	Hot Dip Galvanising	
Zinc and Yellow/Bichromate	Cadmium	Ceramic Coating (Xylar)	Molybdenum Disulphide	

Email : navas@reliablesteel.in

www.reliablesteel.in

Phone : +91 22 42132924

Fax : +91 22 23859458

We Export...



Reliable
Steel Distributors

AN ISO 9001:2008 CERTIFIED COMPANY

Manufacturers & Exporters for

Carbon Steel | Stainless Steel | Alloy Steel | Titanium | Fabrication | Pipe sleeve

Head Off. :

29-B, Nakoda Bhuvan, Sindhi Lane, Mumbai - 400 004. Maharashtra, India.

Phone : +91 22 2389 8341 | 2387 1561 | Fax : +91 22 2385 9458 | Email : sales@reliablesteel.in